

Array

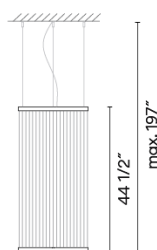
1820

Design By Umut Yamac

The Array pendant combines a series of fine technical filaments between two rings, The indirect light rises through the cylindrical form creating a color gradient.

VIBIA

Spec sheet



Optional: Extra cable length
Min. Quantity, upcharge and extra lead time apply

Finish

- 24 Beige M1
NCS S 2005-Y50R
- 47 Green L1
NCS S 4005-G80Y
- 37 Terra Red
NCS S 4040-Y70R

LED color temperature

2700 K

Dimming

0-10V

Installation type

Surface / Remote Micro

Materials

Upper ring: Aluminum
Bottom ring: Brass
Diffuser: PC- Polycarbonate
Threads: PES FR

Light source

1 x LED STRIP 33W 48V

LED

CRI>90 3993 lm 121
2700 K

Driver

Constant Voltage 100~277 V V
50~60 Hz HZ

Dimmable LED IP20 Multi-volt

UL Dry Location 50-60Hz 0-10V

Application

Pendants

Packaging

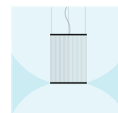
Box

Gross weight
Net weight

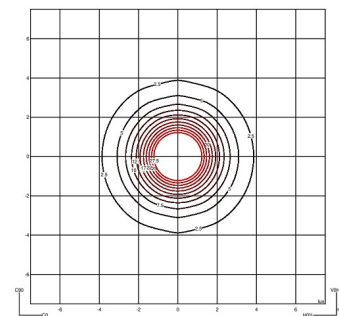
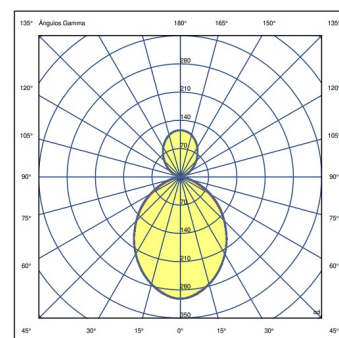
Lighting effect

General lighting

Lamp for general lighting that equally distributes the light in all directions.

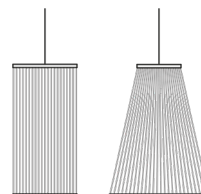


Photometric Data



Efficiency	100%
Coordination System	CG
Total Flux	889
Maximum Value	301.92 cd

Other Applications



VIBIA, INC.

USA & CANADA
272 Fernwood Ave. Edison, NJ 08837. USA
Phone 732 417 1700 sales@vibia.com www.vibia.com/us/usa

HEADQUARTERS
Progrés 4-6. 08850 Gavà
(Barcelona - Spain)